

MAYOR'S OFFICE OF COMMUNITY DEVELOPMENT
CITY OF NEW ORLEANS

Mitchell J. Landrieu
MAYOR

Cedric S. Grant
DEPUTY MAYOR

May 3, 2012

Ms. Pamela Breaux
Louisiana State Historic Preservation Officer
Louisiana Office of Culture, Recreation & Tourism
Office of Cultural Development
P.O. Box 44247
Baton Rouge, LA 70804-44247

RE: Redevelopment of Iberville Housing Project --Areas of Potential Effect

Dear Ms. Breaux:

As the "agency official" responsible for compliance with Section 106 of the National Historic Preservation Act (NHPA) for the above referenced project, the City of New Orleans (City) has reviewed the project undertaking and is submitting the following Areas of Potential Effect (APEs) for your review and consideration. Based on our analysis of potential impacts, coupled with our discussions with the State Historic Preservation Office (SHPO), the City recommends two APEs for the proposed undertaking. There is one APE for the buildings and another APE for archaeology and cemetery. The APE for the buildings is bounded by Claiborne Avenue, Canal Street, Basin Street and the Orleans Avenue boundary of Armstrong Park. The APE for archaeology and cemetery represents the actual footprint of proposed construction, including the immediate Iberville project area and the adjacent Winn Dixie property as depicted in the attached map, which clearly defines the boundaries of the proposed APEs. We believe any impacts associated with the proposed undertaking will not be realized beyond the proposed APE boundaries listed.

We respectfully submit this analysis for your consideration and review and request to formalize the APE boundaries. Please note that this documentation updates the previous letter dated January 5, 2012. Please confirm that these boundaries have been agreed to by SHPO. Do not hesitate to contact me (504-658-4357) at your earliest convenience should you have any questions or comments that require further discussion.

Sincerely,



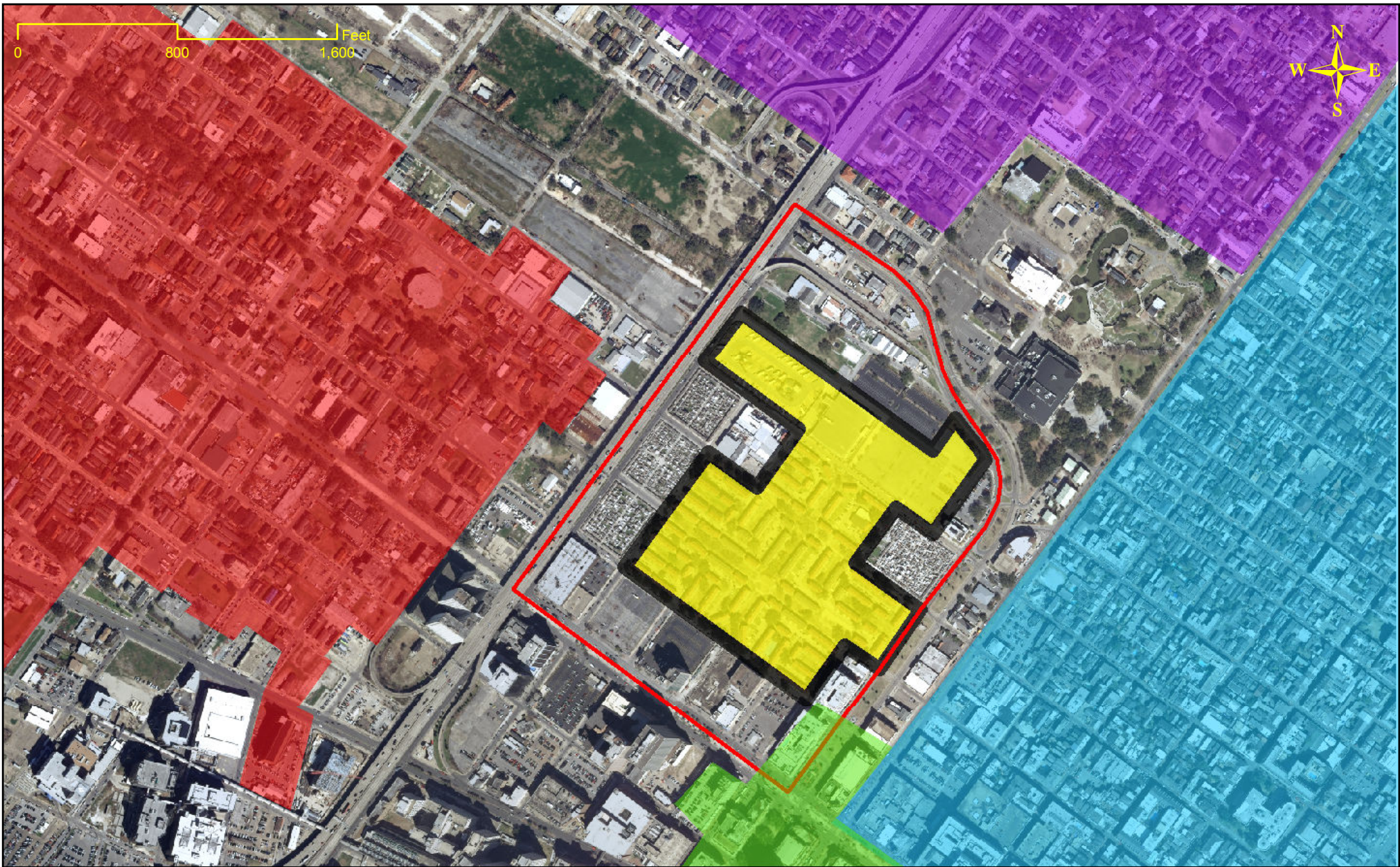
Brian E. Lawlor
Director of Housing Policy and Community Development
City of New Orleans

Cc: Dr. Charles McGimsey, SHPO
Roma Campanile, HUD
Joy Willig, HANO
Chris Clement, HRI
Shirley Smith, OCD

Enclosure

1340 POYDRAS STREET | SUITE 1000 | NEW ORLEANS, LOUISIANA 70112
PHONE 504-658-4200 | FAX 504-658-4238





IBERVILLE REDEVELOPMENT PROJECT
 City of New Orleans



Legend	
	Project Area
	Area of Potential Effect for Buildings
	Area of Potential Effect for Archaeology
	Vieux Carre Historic District
	Lower Central Business District
	Esplanade Ridge Historic District
	Mid-City Historic District

project no	15110193
produced	j chimento
date	05-02-12

Source (Citation) for 2010 six inch pixel Imagery Area Mosaics
 This imagery was provided by the Louisiana Governor's Office of Homeland Security and Emergency Preparedness (GOHSEP) as the sole source owner, and is shared with Louisiana state government agencies in the interest of good government practices.
 Reproduction and distribution of the data is prohibited. Please refer any requests for data to the Deputy Director for Management, Finance and Intergovernmental Affairs (DMFA) at GOHSEP. This imagery was distributed by the Regional Planning Commission for Jefferson, Orleans, Plaquemine, St. Bernard and St. Tammany Parishes (RPC) with permission from GOHSEP.
 GOHSEP and the RPC are not responsible for any errors arising from any use of airborne data to the data. Under no circumstances is resale or distribution of the data permitted.
 Mosaics were produced by the RPC and subset for project areas as requested.
 Imagery Information: The red, green, blue (true color) and near infrared four-band aerial imagery was captured between February 10th and April 2nd of 2010 (re-flights for any corrections flown until April 20th, 2010) by Sanborn Map Company, Inc.
 The imagery is projected to UTM 18N UTM 83; unit of measure is meters.
 The spatial resolution is approximately a six inch pixel.
 Any use of the data must be accompanied with the citation and accompanying seals and logos embedded within.

